

Customer :

customer

Customer part :

customer part

Comment :

Comment

S1=4.88

S2=3.66

Tmax=454

Tp S2=493.0

PI=0.57

HI=79

Sample =1742.30

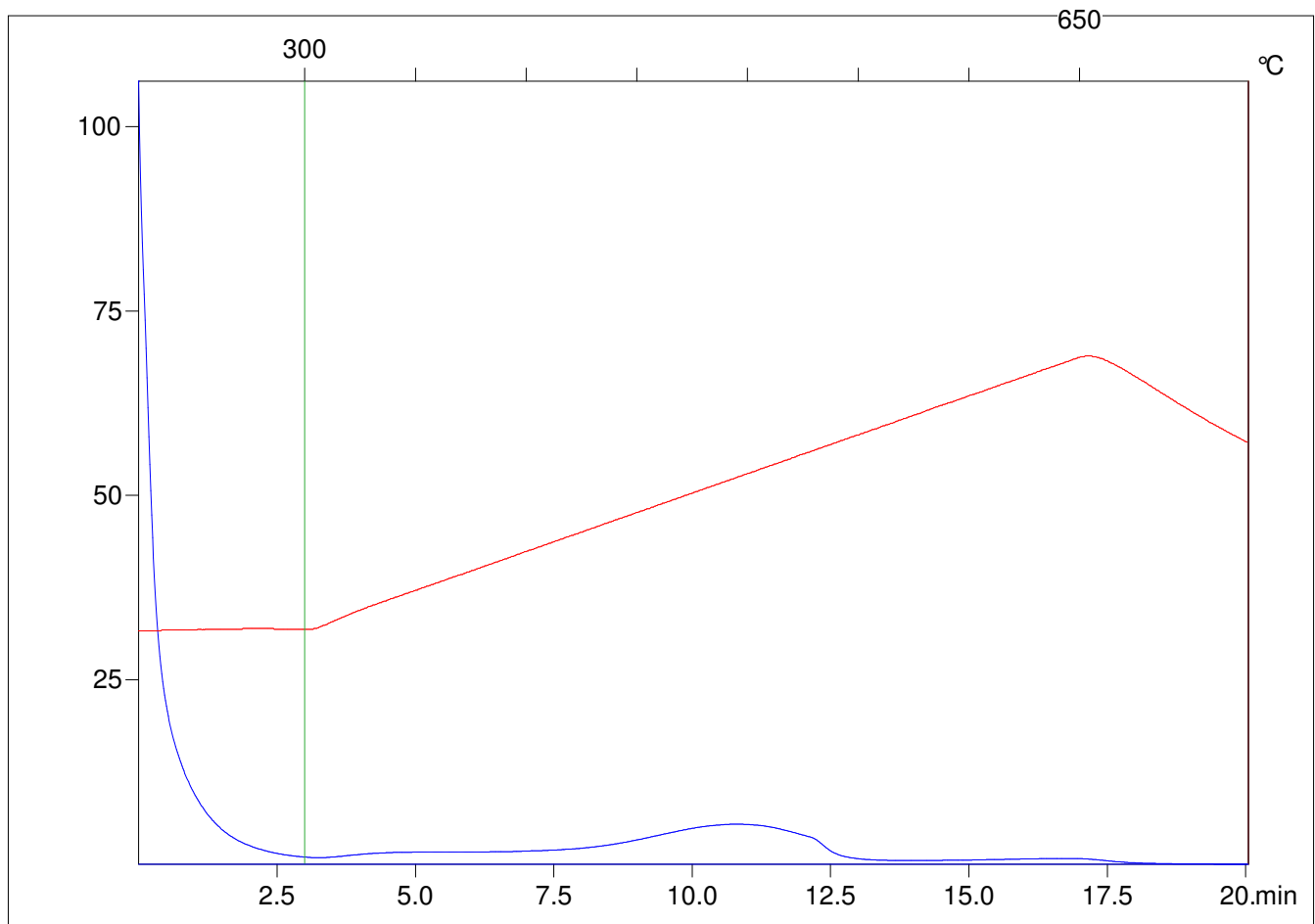
Method =Bulk Rock

Cycle=Basic

KFID(10*9)=1444

Qty =70.0

TOC=4.65



C:\VINC\PK2_1792\PK078.R00 : FID pyrolysis graphic

State

Pyro Status

Oxi Status